

The Heat Inside

***StormRider* HEATED BODYWARMER USER INSTRUCTIONS**

WELCOME

Your high performance StormRider heated bodywarmer has been designed to provide you with warmth where and when you need it, whatever the weather.

The core-heating element, FabRoc™, is a revolutionary material invented for use in the aerospace industry and is extremely efficient in generating heat from a low voltage source. FabRoc™ panels are sewn into your StormRider to provide direct heat to your body in certain key areas, transferring warmth throughout your body.

StormRider FabRoc™ panels are normally pre-set to a maximum surface temperature of 122°F. It is not possible to overheat FabRoc™ as it automatically uses less power as it reaches its operating temperature, a unique property that ensures the material is intrinsically safe.



PRODUCT CONTENTS

- exo² StormRider bodywarmer
- Fused Power Unit Cable
- FabRoc™ panels sewn into the garment
- Portable battery pack (Optional Accessory)
- Battery charger & power cord (Optional Accessory)
- StormRider Controller (Optional Accessory)

CONNECTING TO THE MOTOR CYCLE

The StormRider bodywarmer is simple to operate and set-up. Every bodywarmer comes supplied with a standard power cable, which has an inline 10 Amp fuse. The fused line is to be connected to the positive terminal of the motorcycle battery. The other line is to be connected to the battery's negative terminal.

To operate the StormRider, simply plug the bodywarmer power cord into the socket. The bodywarmer will begin to heat up and will reach its maximum temperature in 10 - 15 minutes. The self-regulating properties of the jacket will prevent it from overheating.

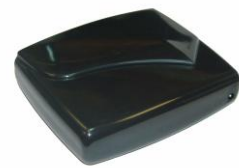
STORMRIDER CONTROLLER (OPTIONAL)

The StormRider Controller is easy to mount and operate. The controller mount is designed to fit onto the existing clutch cable mount. Simply remove the top bolt from the clutch mount, pass it through the mounting plate and then refit the bolt back onto the clutch mount. The StormRider Controller connects to the battery via an inline 10 Amp fuse. The fused line is connected to the motorcycle battery positive terminal and the other connected to the battery negative terminal. The StormRider controller has an **ON / OFF** switch and a digital readout. The LED readout varies from 0 – 9 (0 = OFF (No Power to Jacket), 1 = 50% Power and 9 = 100% Power). When first switched ON, the controller will default to the top level 9 (100% power) for fast warm up. The selector button on the front will cycle the power level to the desired setting.



USING THE BATTERY

1. Remove the connecting cables from the pocket.
2. Insert the small 1.3mm DC plug into the battery socket marked 'heater'.
3. Use the ON / OFF switch on the battery pack to control the heat output.



CHARGING THE BATTERY

1. Remove the battery pack completely from the jacket/vest.
2. Connect the charger unit to the battery socket marked 'charger'. (The charger should be connected to the battery before inserting the power cord into the wall outlet).
3. Plug the charger into the wall outlet.
4. **DO NOT CONNECT THE CHARGER UNIT TO THE BATTERY WHILE THE BATTERY IS CONNECTED TO THE BODYWARMER.**

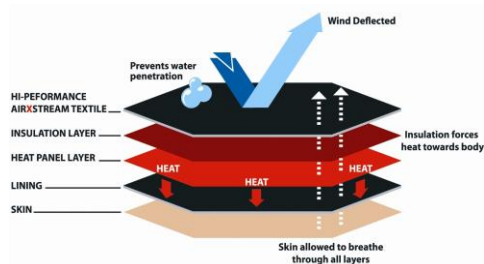
The red light on the front of the charger will light up when the battery is being charged. Depleted battery packs will take approximately 3 hours to fully recharge. When the battery is completely charged, the system allows no further current to enter the battery. When fully charged, the red light will turn to green.

The charger unit supplied has been chosen specifically for the exo² battery packs. **No other charger unit should be used. The use of any other charger unit is dangerous, may cause injury and will void the warranty.**

GETTING THE BEST RESULTS

Although the battery has been charged and checked, we recommend that you charge it for at least 3 hours prior to first use. The closer the FabRoc™ panels are to your skin, the more heat you will feel. For maximum benefit, wear only a fine pullover, t-shirt or blouse underneath your StormRider bodywarmer.

Bodywarmers using an optional battery pack will provide heat for up to 3 hours of continuous use. Experience suggests that you will get the best results from your StormRider by switching the battery **OFF** after approximately 15 – 20 minutes, as the heat generated from your muscles will be sufficient to keep you warm. Turn the battery **ON** at least 5 minutes prior to entering a cold environment for comfort and battery conservation purposes.



SAFETY FEATURES

The FabRoc® heating system has been designed for safe and reliable use. It has been tested to comply with European safety regulations and has been marked with the CE seal of approval. Safety devices are included to ensure the unit is rendered safe, even under faulty conditions. **DO NOT** replace or interfere with the electrical components in the heated bodywarmer, the battery or the charger unit. **DO NOT attempt to open the sealed battery unit.** Batteries should be discarded in accordance to local governmental regulations.

CLEANING INSTRUCTIONS

Remove the batteries from your heated bodywarmer. Hand wash the garment in warm water using any commercial liquid soap product and rinse thoroughly. It is inadvisable to use fabric conditioner, biological powders or strong detergents. **DO NOT dry clean.** It is recommended to drip or line dry the bodywarmer.

WARRANTY

Every heated bodywarmer has a one-year warranty covering all electronic and mechanical failures. In the unlikely event that any part should fail within the first year, return it to us and we will repair or replace it free of charge. **Note: The warranty does not cover intentional alterations, accidental damage or improper cleaning.**

TROUBLESHOOTING

What happens if my heated bodywarmer is torn?

1. **DO NOT** attempt to replace or interfere with the electrical components in the bodywarmer.
2. Return the garment to exo² *The Heat Inside* for repair.

What happens if my heated bodywarmer does not get warm?

Check to ensure that your StormRider bodywarmer is connected to a power source, either via the motorcycle fused cable or via the optional battery pack.

If connected directly to the motorcycle, confirm that both the cable to the bike battery and the cable to the FabRoc™ heat panels are fitted correctly. The heat panel cable is located inside the right pocket of your StormRider.

When using the motorcycle power cable to connect to your StormRider, the small battery cable that connects to the optional portable battery pack is to be plugged into its associated socket (also found inside the right hand pocket of your StormRider).

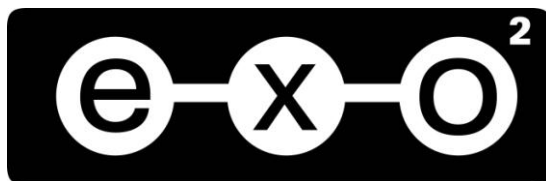
When using the portable battery pack, ensure that the battery is charged. After plugging the battery pack into the associated charger, if the red LED on the charger comes on and stays on, the battery pack needs to be recharged. If the battery pack is charged, showing a green LED when switched on, confirm that corresponding cable is securely inserted into the battery pack at the socket marked 'heater'.

NEVER LEAVE BATTERIES THAT ARE CHARGING UNATTENDED!

DO NOT WEAR YOUR STORMWALKER JACKET/VEST WHILE CHARGING THE BATTERY!

KEEP BATTERIES AWAY FROM WATER!

Should you have any questions about your heated products, please contact:



The Heat Inside

Customer Service

exo² The Heat Inside, NA, LLC

300 Lester Mill Road

Suite 220

Locust Grove, GA 30248

TEL: 1-877-exo2-HEAT

WEB: www.exo2theheatinside.com

E-mail: info@exo2theheatinside.com